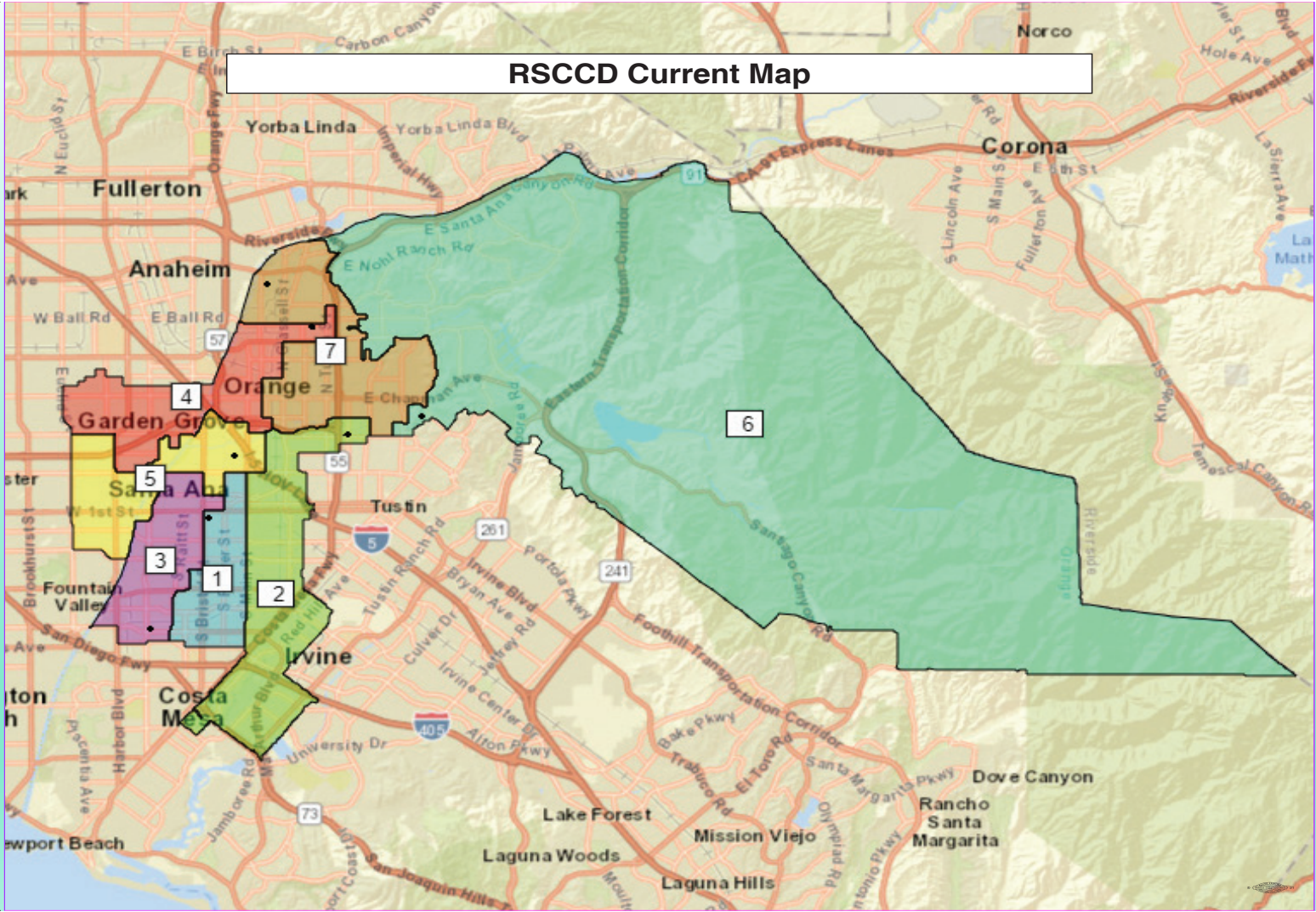


RSCCD PROPOSALS AND DEMOGRAPHIC DATA

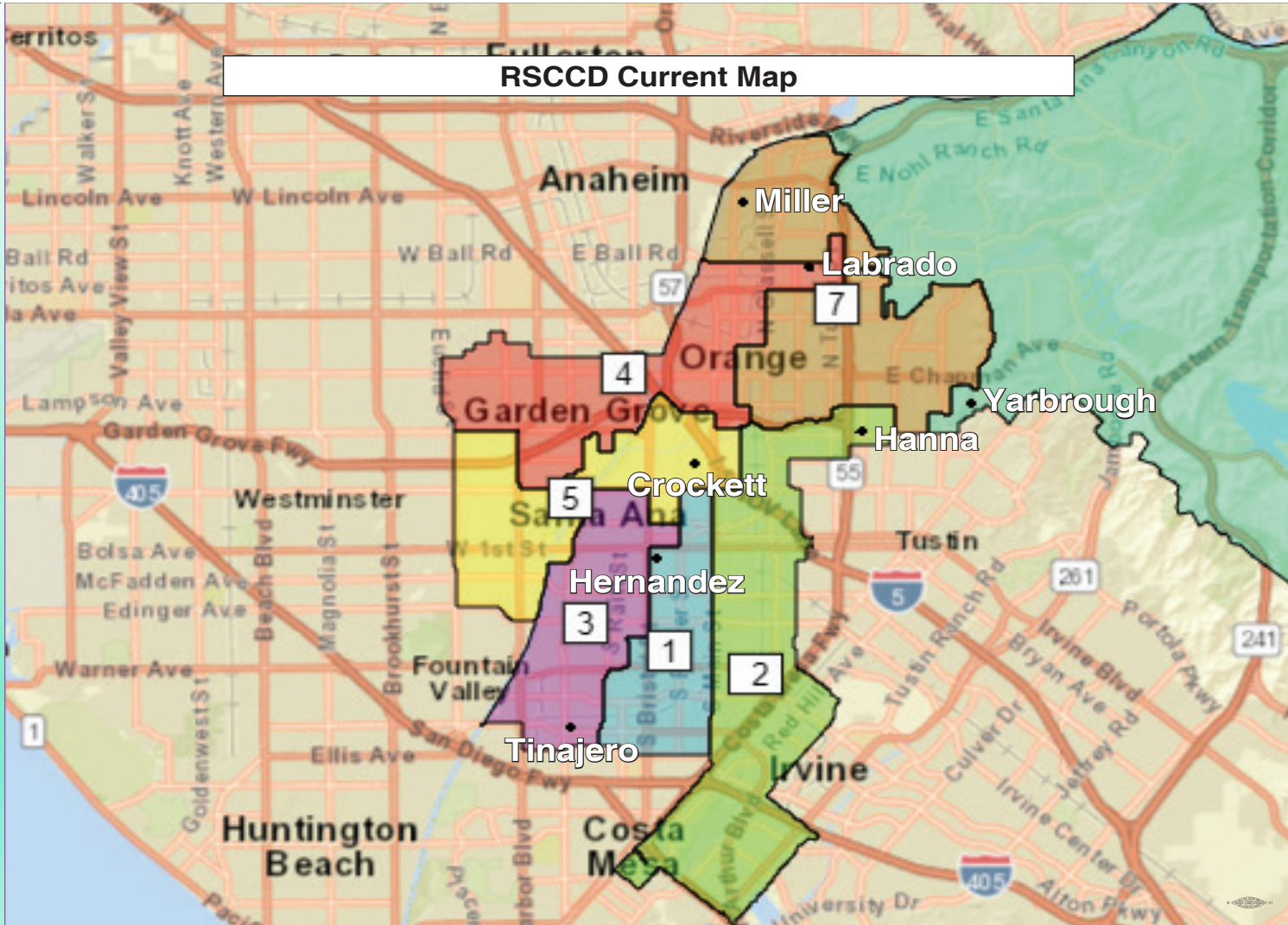
ARDA Demographics



RSCCD Current Map



RSCCD Current Map



RSCCD Trustee Area Current Demographics

Population 571,255

Median 81,608

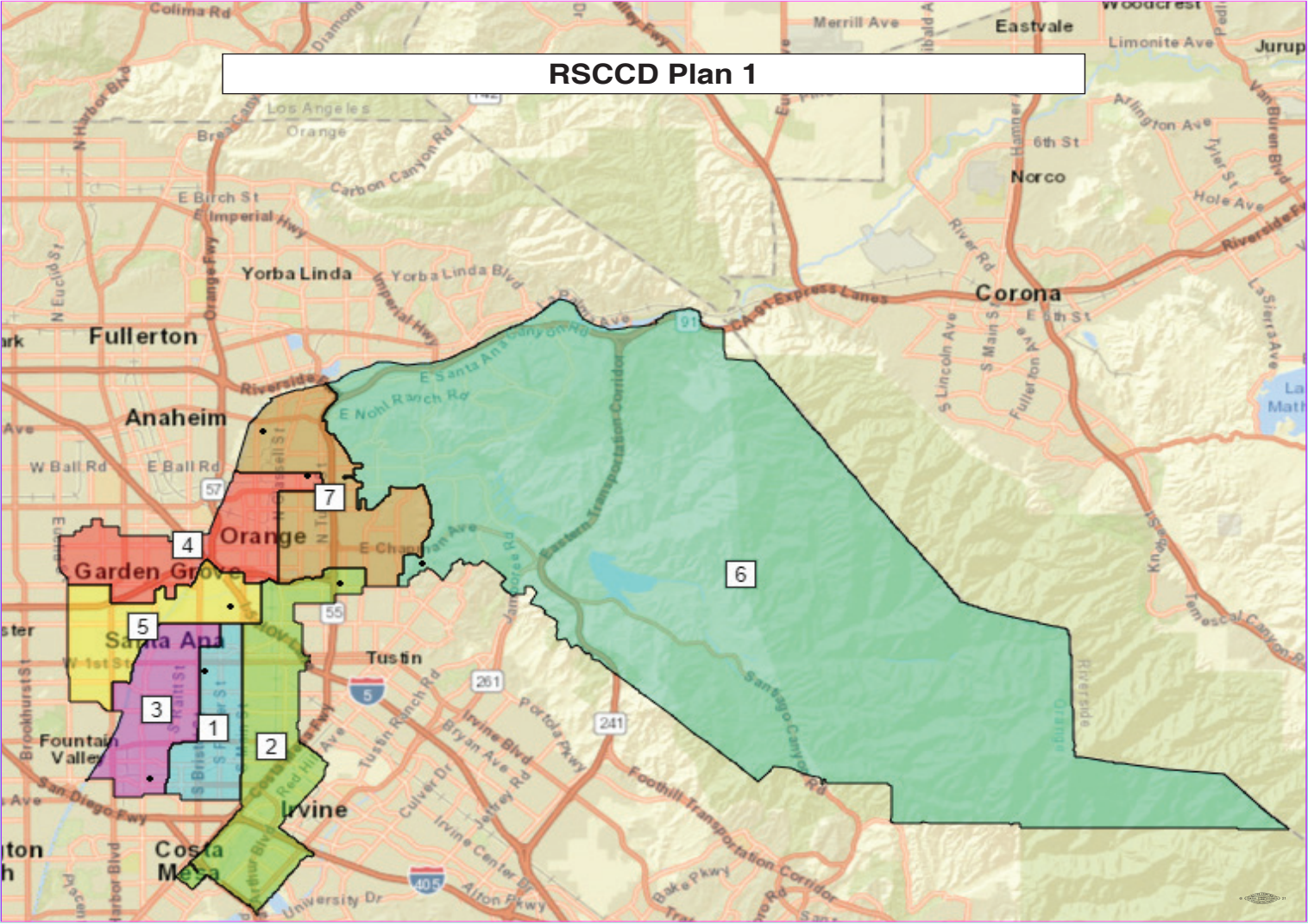
Deviation 9.0%

Trustee Area	TA 1		TA 2		TA 3		TA 4		TA 5		TA 6		TA 7	
Population*	77,138		81,813		78,127		84,428		82,109		83,484		84,156	
Population Variance	-5.5%		-0.3%		-4.3%		3.5%		0.6%		2.3%		3.1%	
CVAP**	39,994		42,770		37,004		52,851		47,127		62,023		56,424	
TP and CVAP	TP	CVAP	TP	CVAP	TP	CVAP	TP	CVAP	TP	CVAP	TP	CVAP	TP	CVAP
Hispanic	80.1%	68.9%	74.3%	56.3%	82.8%	71.2%	54.2%	43.0%	60.7%	48.8%	18.1%	15.2%	43.7%	28.3%
White	8.7%	17.3%	14.6%	29.8%	5.4%	12.0%	16.9%	28.1%	10.2%	15.9%	53.9%	62.9%	39.8%	57.4%
Asian	7.7%	10.9%	7.4%	9.8%	8.7%	13.3%	24.6%	25.1%	25.9%	32.7%	19.7%	17.9%	10.8%	11.1%
African American	1.1%	0.9%	1.2%	2.6%	1.2%	2.2%	1.4%	2.0%	1.0%	0.8%	1.2%	1.9%	1.4%	1.1%
Native American	0.2%	0.3%	0.2%	0.4%	0.2%	0.4%	0.2%	0.3%	0.2%	0.1%	0.1%	0.1%	0.2%	0.2%
Pacific Islander	0.2%	0.7%	0.2%	0.2%	0.2%	0.2%	0.3%	0.3%	0.3%	0.4%	0.3%	0.1%	0.3%	0.3%
Other Race	0.3%	0.2%	0.3%	0.3%	0.3%	0.2%	0.3%	0.2%	0.4%	0.3%	0.6%	0.2%	0.5%	0.3%
Two or More Races	1.6%	0.7%	1.9%	0.9%	1.3%	0.5%	2.0%	1.0%	1.5%	0.9%	6.1%	1.8%	3.1%	1.2%

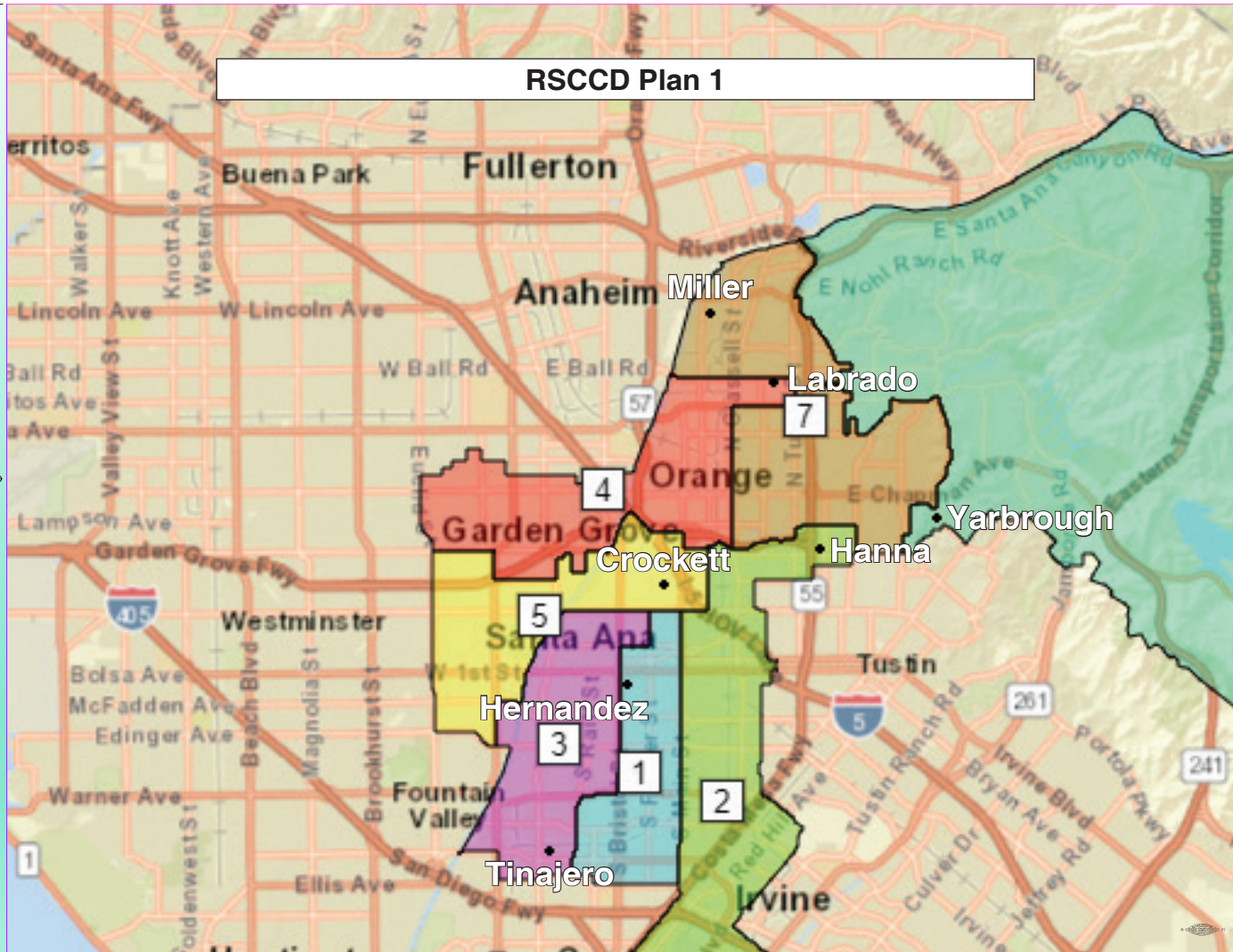
* Source: Census 2020 P.L. 94-171 Redistricting Data Summary Files ** Source: American Community Survey, 2015-2019 Data

RSCCD TRUSTEE AREA PLAN 1
“Right Sizing”

RSCCD Plan 1



RSCCD Plan 1



RSCCD Trustee Area Plan 1 Demographics

Population 571,255

Median 81,608

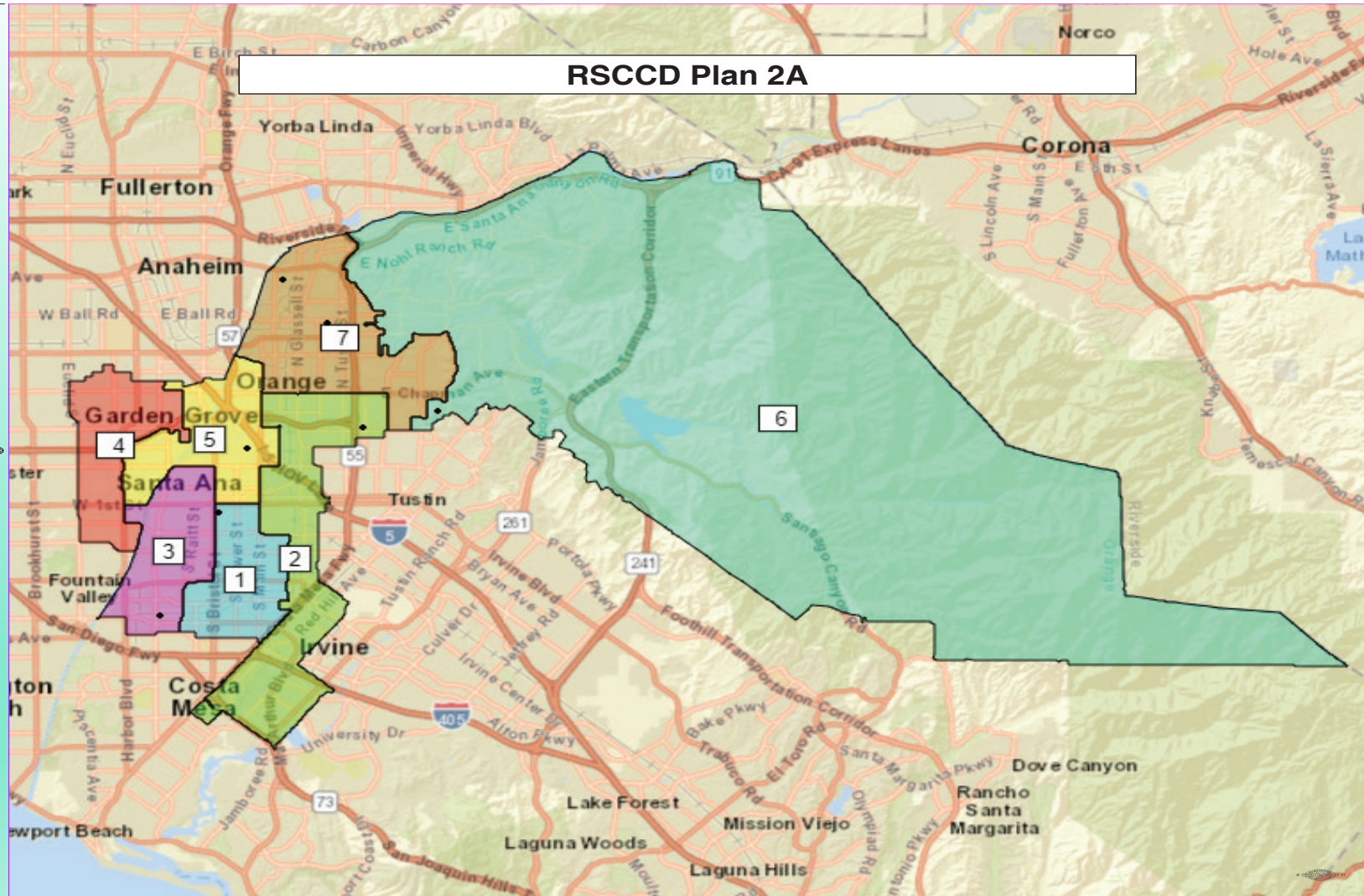
Deviation 0.6%

Trustee Area	TA 1		TA 2		TA 3		TA 4		TA 5		TA 6		TA 7	
Population*	81,337		81,813		81,777		81,603		81,750		81,351		81,624	
Population Variance	-0.3%		0.3%		0.2%		0.0%		0.2%		-0.3%		0.1%	
CVAP**	41,629		42,771		40,384		52,621		46,539		60,787		53,463	
TP and CVAP	TP	CVAP	TP	CVAP	TP	CVAP	TP	CVAP	TP	CVAP	TP	CVAP	TP	CVAP
Hispanic	79.5%	67.8%	74.3%	56.3%	82.3%	70.9%	51.9%	41.0%	60.3%	48.2%	17.1%	14.7%	44.7%	28.5%
White	9.3%	18.0%	14.6%	29.8%	5.1%	11.8%	19.8%	30.8%	9.7%	15.7%	54.5%	63.2%	39.0%	57.9%
Asian	7.6%	10.9%	7.4%	9.8%	8.4%	14.4%	24.5%	24.2%	27.4%	33.6%	19.7%	18.2%	11.1%	10.4%
African American	1.1%	1.2%	1.2%	2.6%	1.2%	1.8%	1.4%	1.8%	1.0%	0.9%	1.2%	1.8%	1.4%	1.2%
Native American	0.2%	0.3%	0.2%	0.3%	0.2%	0.3%	0.1%	0.3%	0.2%	0.1%	0.1%	0.1%	0.1%	0.2%
Pacific Islander	0.2%	0.8%	0.2%	0.2%	0.2%	0.1%	0.3%	0.4%	0.3%	0.4%	0.3%	0.1%	0.3%	0.3%
Other Race	0.3%	0.2%	0.3%	0.3%	0.3%	0.2%	0.3%	0.3%	0.4%	0.3%	0.6%	0.3%	0.5%	0.3%
Two or More Races	1.6%	0.7%	1.8%	0.8%	1.3%	0.5%	2.0%	1.1%	1.5%	0.8%	6.3%	1.8%	3.2%	1.3%

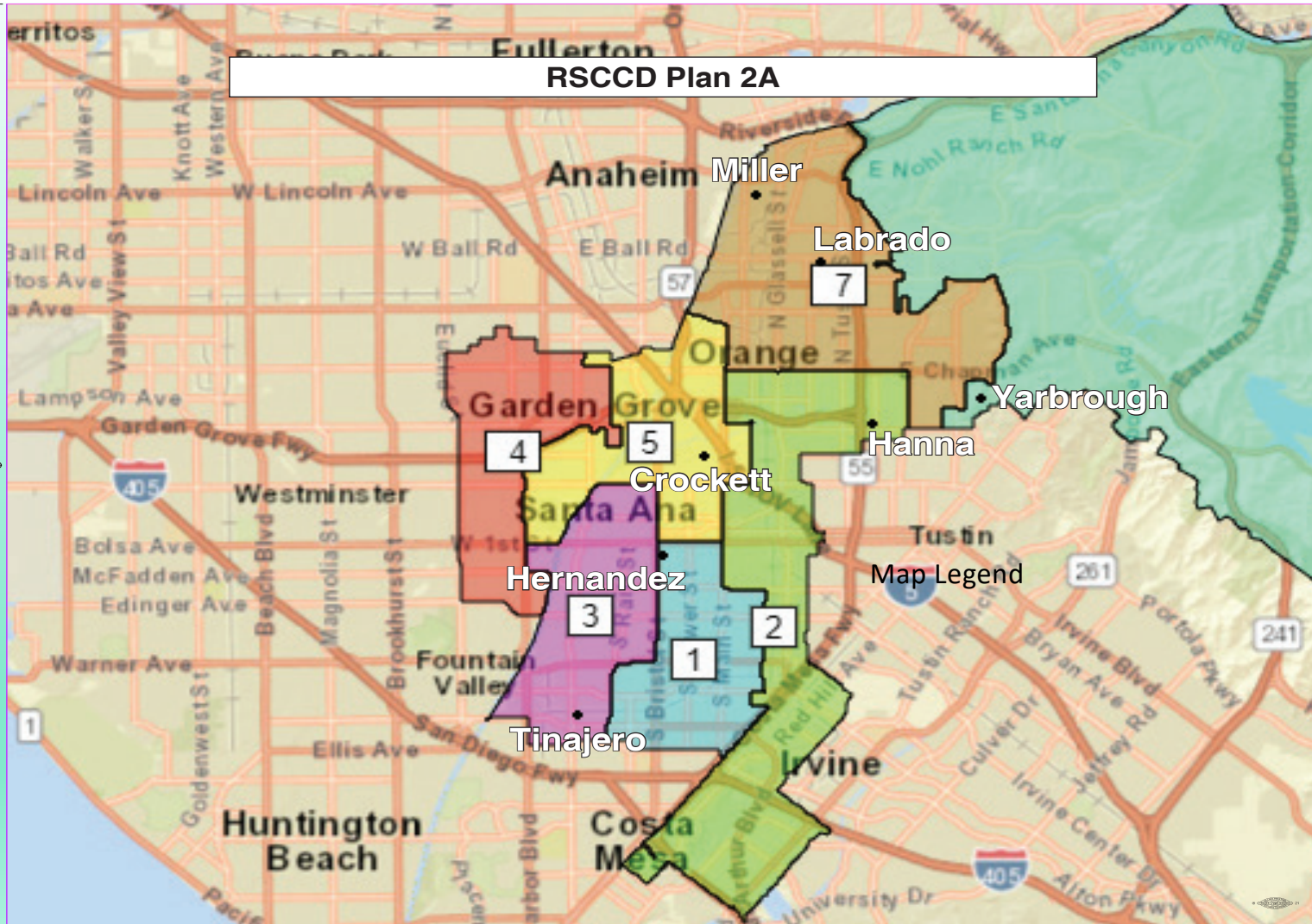
* Source: Census 2020 P.L. 94-171 Redistricting Data Summary Files ** Source: American Community Survey, 2015-2019 Data

**RSCCD TRUSTEE AREA PLAN 2A
ASIAN PLURALITY PLAN**

RSCCD Plan 2A



RSCCD Plan 2A



RSCCD Trustee Area Plan 2A Demographics

Population 571,255

Median 81,608

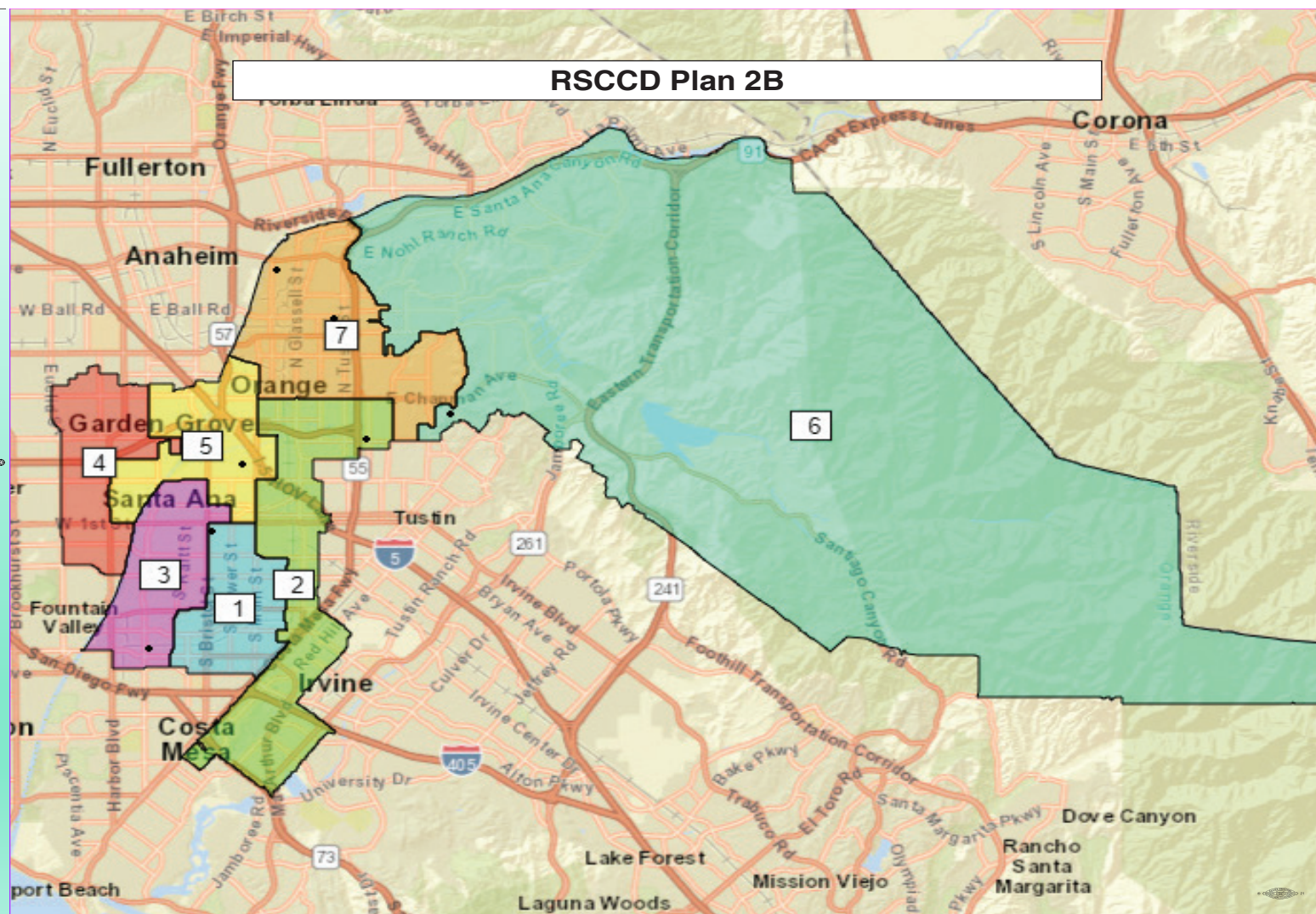
Deviation 3.2%

Trustee Area	TA 1		TA 2		TA 3		TA 4		TA 5		TA 6		TA 7	
Population*	80,325		81,897		80,459		81,360		82,455		81,869		82,890	
Population Variance	-1.6%		0.4%		-1.4%		-0.3%		1.0%		0.3%		1.6%	
CVAP**	43,643		45,320		38,340		49,912		46,805		61,149		53,025	
TP and CVAP	TP	CVAP	TP	CVAP	TP	CVAP	TP	CVAP	TP	CVAP	TP	CVAP	TP	CVAP
Hispanic	80.6%	70.7%	65.3%	45.8%	83.6%	72.2%	49.8%	39.5%	67.0%	53.7%	17.2%	14.8%	47.5%	30.0%
White	8.7%	16.3%	21.7%	39.5%	4.4%	10.4%	10.6%	17.3%	15.0%	25.8%	54.5%	63.2%	36.6%	55.7%
Asian	7.6%	10.2%	8.4%	10.3%	8.9%	14.2%	36.9%	40.7%	13.7%	9.5%	20.2%	18.1%	10.4%	6.9%
African American	1.0%	0.9%	1.2%	2.5%	1.1%	1.9%	0.9%	0.8%	1.5%	2.1%	1.2%	1.8%	1.4%	1.3%
Native American	0.2%	0.2%	0.2%	0.4%	0.2%	0.2%	0.1%	0.2%	0.2%	0.2%	0.1%	0.1%	0.1%	0.1%
Pacific Islander	0.2%	0.7%	0.2%	0.3%	0.2%	0.2%	0.3%	0.2%	0.3%	0.4%	0.3%	0.1%	0.3%	0.4%
Other Race	0.3%	0.2%	0.3%	0.4%	0.3%	0.2%	0.3%	0.4%	0.4%	0.2%	0.6%	0.3%	0.5%	0.3%
Two or More Races	1.3%	0.7%	2.5%	0.9%	1.3%	0.5%	1.5%	0.9%	1.8%	0.8%	5.9%	1.8%	3.1%	1.4%

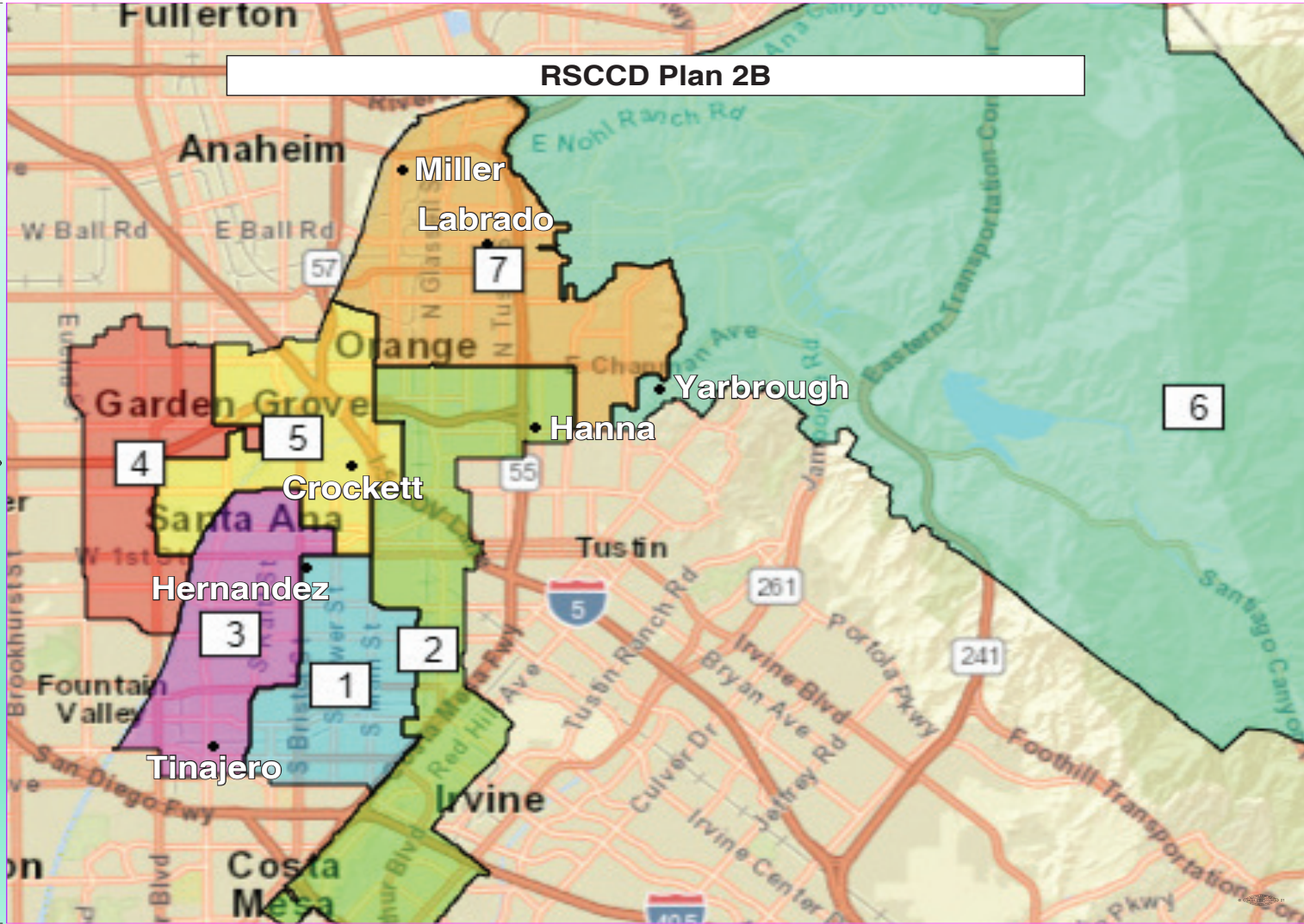
* Source: Census 2020 P.L. 94-171 Redistricting Data Summary Files ** Source: American Community Survey, 2015-2019 Data

**RSCCD TRUSTEE AREA PLAN 2B
ASIAN PLURALITY PLAN
“GGUSD Option”**

RSCCD Plan 2B



RSCCD Plan 2B



RSCCD Trustee Area Plan 2B Demographics

Population 571,255

Median 81,608

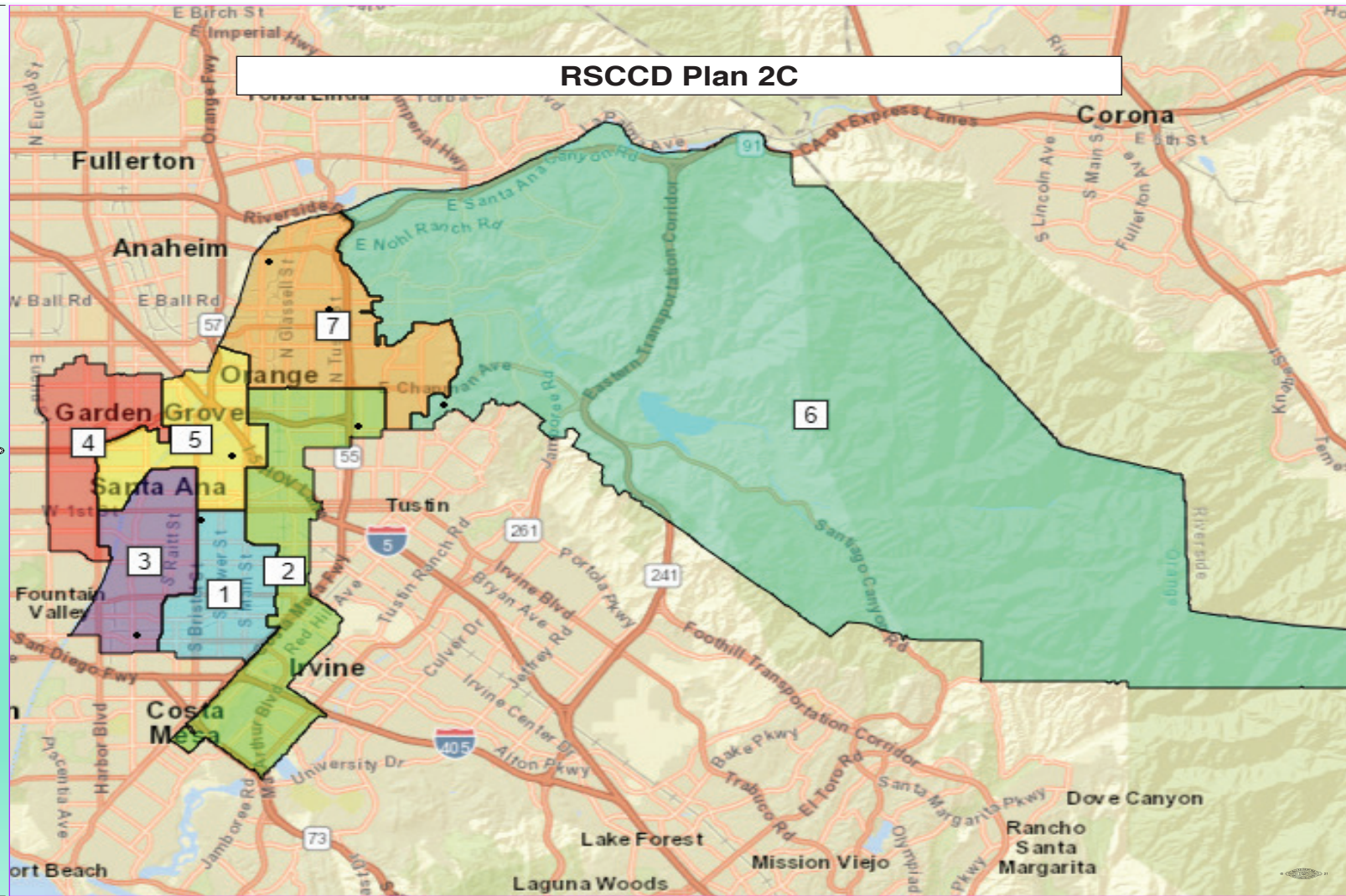
Deviation 3.5%

Trustee Area	TA 1		TA 2		TA 3		TA 4		TA 5		TA 6		TA 7	
Population*	80,325		81,897		83,052		80,981		80,241		81,869		82,890	
Population Variance	-1.6%		0.4%		1.8%		-0.8%		-1.7%		0.3%		1.6%	
CVAP**	43,643		45,320		39,680		49,042		46,335		61,149		53,025	
TP and CVAP	TP	CVAP	TP	CVAP	TP	CVAP	TP	CVAP	TP	CVAP	TP	CVAP	TP	CVAP
Hispanic	80.6%	70.7%	65.3%	45.8%	82.9%	71.1%	50.4%	40.0%	66.45	53.3%	17.2%	14.8%	47.5%	30.0%
White	8.7%	16.3%	21.7%	39.5%	5.3%	12.0%	9.6%	16.6%	15.0%	25.5%	54.5%	63.2%	36.6%	55.7%
Asian	7.6%	10.2%	8.4%	10.3%	8.4%	14.2%	37.0%	40.7%	14.4%	9.5%	20.2%	18.1%	10.4%	6.9%
African American	1.0%	0.9%	1.2%	2.5%	1.1%	2.1%	0.9%	0.7%	1.5%	2.1%	1.2%	1.85	1.4%	1.35
Native American	0.2%	0.2%	0.2%	0.4%	0.2%	0.2%	0.1%	0.2%	0.2%	0.2%	0.1%	0.1%	0.1%	0.1%
Pacific Islander	0.2%	0.7%	0.2%	0.3%	0.2%	0.2%	0.3%	0.2%	0.3%	0.4%	0.3%	0.1%	0.3%	0.4%
Other Race	0.3%	0.2%	0.3%	0.4%	0.3%	0.2%	0.3%	0.4%	0.4%	0.2%	0.6%	0.3%	0.5%	0.3%
Two or More Races	1.3%	0.7%	2.5%	0.9%	1.5%		1.3%	0.9%	1.8%	0.8%	5.9%	1.8%	3.1%	1.4%

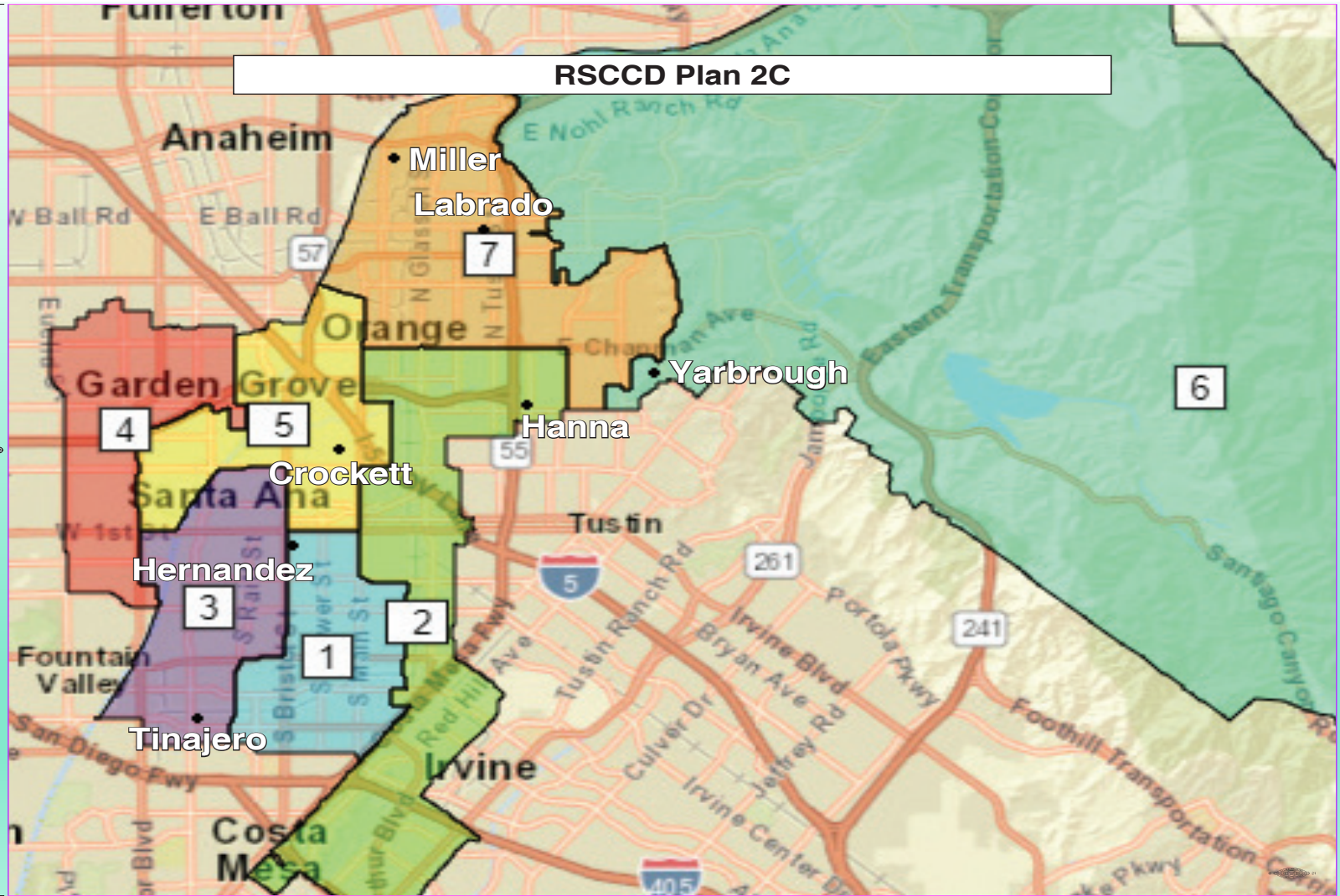
* Source: Census 2020 P.L. 94-171 Redistricting Data Summary Files ** Source: American Community Survey, 2015-2019 Data

RSCCD TRUSTEE AREA PLAN 2C
ASIAN PLURALITY PLAN
“Harbor Boundary”

RSCCD Plan 2C



RSCCD Plan 2C



RSCCD Trustee Area Plan 2C Demographics

Population 571,255

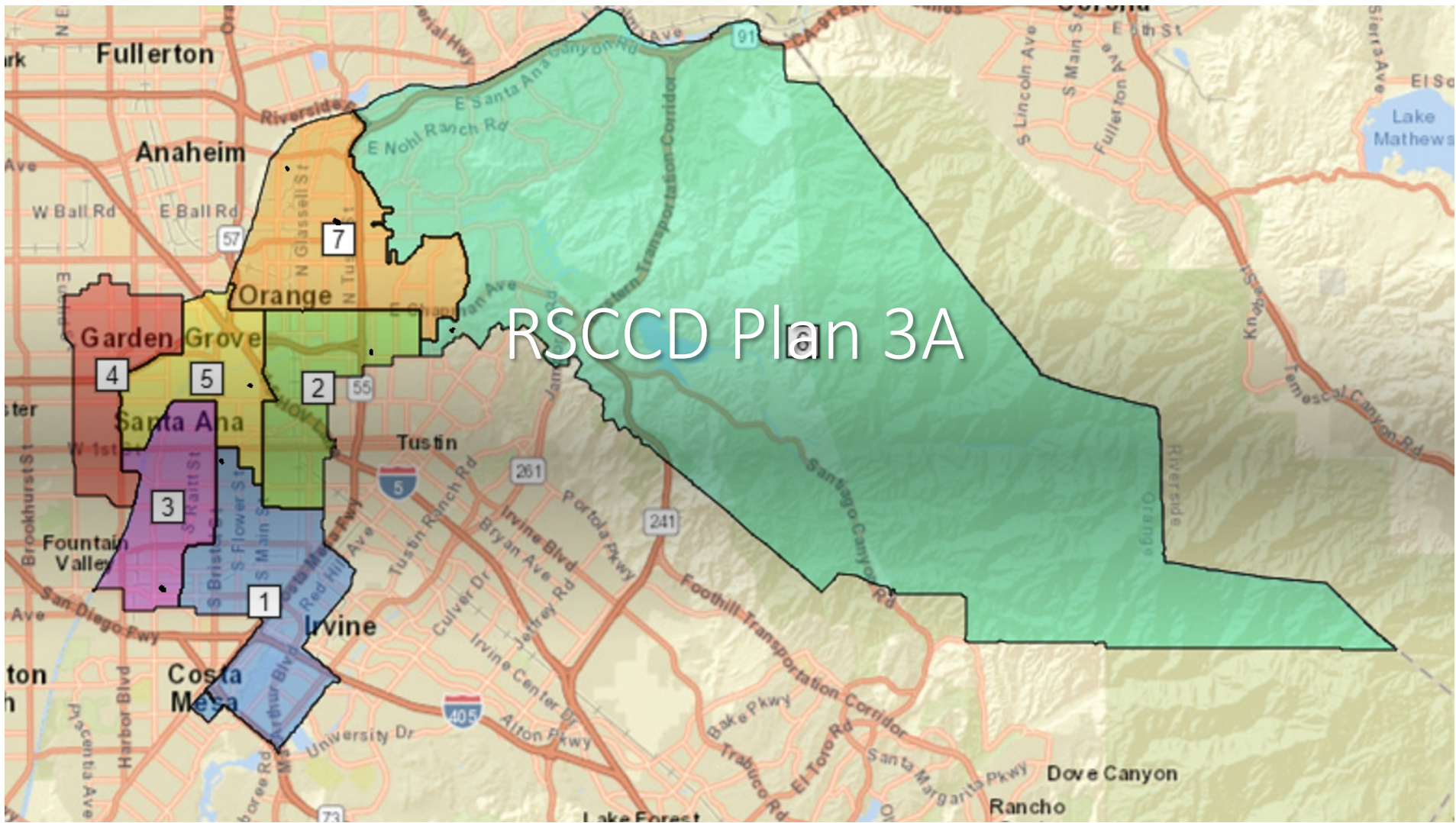
Median 81,608

Deviation 3.2%

Trustee Area	TA 1		TA 2		TA 3		TA 4		TA 5		TA 6		TA 7	
Population*	80,325		81,897		82,353		80,724		81,197		81,869		82,890	
Population Variance	-1.6%		0.4%		0.9%		-1.1%		-0.5%		0.3%		1.6%	
CVAP**	43,643		45,320		39,227		49,675		46,155		61,149		53,025	
TP and CVAP	TP	CVAP	TP	CVAP	TP	CVAP	TP	CVAP	TP	CVAP	TP	CVAP	TP	CVAP
Hispanic	80.6%	70.7%	65.3%	45.8%	83.1%	71.8%	49.7%	38.9%	67.0%	54.1%	17.2%	14.8%	47.5%	30.0%
White	8.7%	16.3%	21.7%	39.5%	4.5%	10.4%	10.3%	17.3%	15.0%	25.8%	54.5%	63.2%	36.6%	55.7%
Asian	7.6%	10.2%	8.4%	10.3%	9.0%	14.2%	36.9%	40.8%	13.9%	9.5%	20.2%	18.1%	10.4%	6.9%
African American	1.0%	0.9%	1.2%	2.5%	1.1%	1.9%	0.9%	0.8%	1.5%	2.1%	1.2%	1.85	1.4%	1.35
Native American	0.2%	0.2%	0.2%	0.4%	0.2%	0.2%	0.1%	0.2%	0.2%	0.2%	0.1%	0.1%	0.1%	0.1%
Pacific Islander	0.2%	0.7%	0.2%	0.3%	0.2%	0.2%	0.3%	0.2%	0.3%	0.4%	0.3%	0.1%	0.3%	0.4%
Other Race	0.3%	0.2%	0.3%	0.4%	0.3%	0.2%	0.3%	0.4%	0.4%	0.2%	0.6%	0.3%	0.5%	0.3%
Two or More Races	1.3%	0.7%	2.5%	0.9%	1.3%	0.5%	1.5%	0.9%	1.8%	0.8%	5.9%	1.8%	3.1%	1.4%

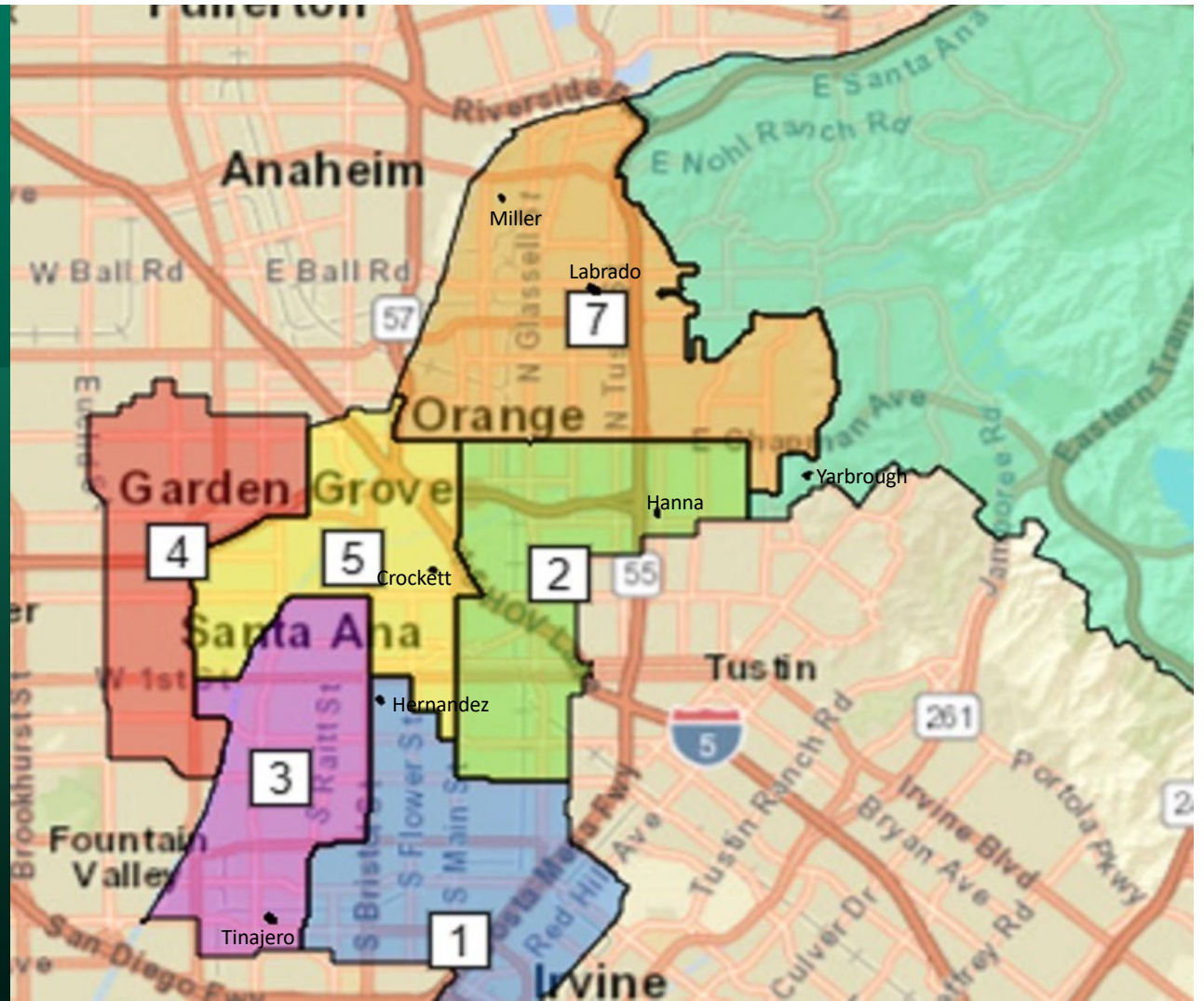
* Source: Census 2020 P.L. 94-171 Redistricting Data Summary Files ** Source: American Community Survey, 2015-2019 Data

RSCCD TRUSTEE AREA PLAN 3A
Latino/Asian Fusion Plan



RSCCD Plan 3A

RSCCD Plan 3A



RSCCD Trustee Area Plan 3A Demographics

Population 571,255

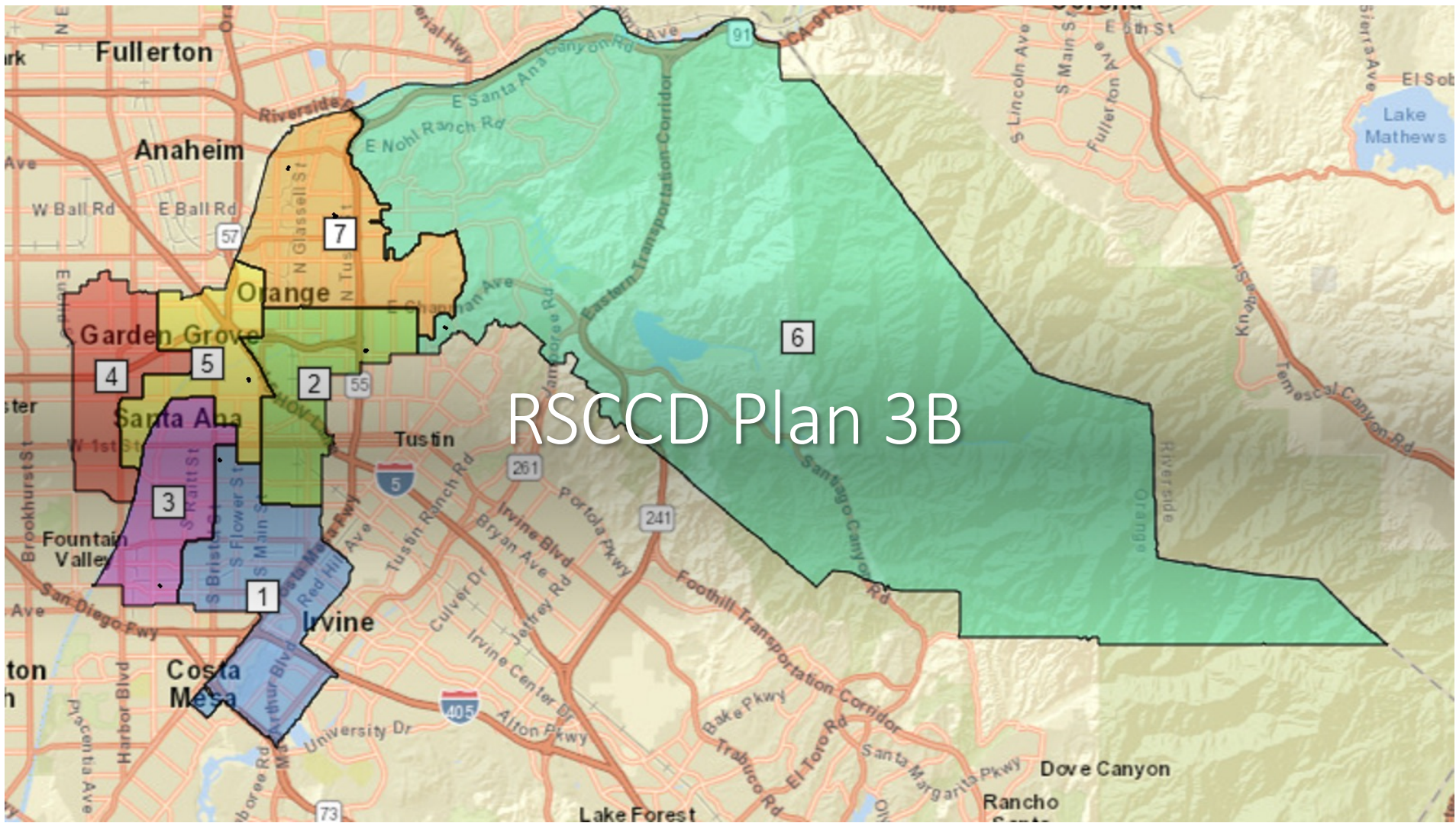
Median 81,608

Deviation 2.1%

Trustee Area	TA 1		TA 2		TA 3		TA 4		TA 5		TA 6		TA 7	
Population*	81,648		82,032		80,459		81,509		81,529		81,869		82,209	
Population Variance	0.1%		0.5%		-1.4%		-0.1%		-0.1%		0.3%		0.7%	
CVAP**	47,439		43,648		38,340		49,772		45,571		61,149		52,275	
TP and CVAP	TP	CVAP	TP	CVAP	TP	CVAP	TP	CVAP	TP	CVAP	TP	CVAP	TP	CVAP
Hispanic	71.0%	59.7%	71.3%	52.7%	83.6%	72.2%	50.2%	39.3%	69.2%	55.8%	17.2%	14.8%	48.2%	30.8%
White	14.1%	24.1%	19.1%	36.4%	4.4%	10.4%	10.2%	17.5%	13.3%	23.6%	54.5%	63.2%	35.8%	54.5%
Asian	11.1%	12.5%	5.9%	7.5%	8.9%	14.2%	36.3%	40.7%	13.6%	16.8%	20.2%	18.1%	10.0%	11.2%
African American	1.2%	1.6%	0.9%	1.8%	1.1%	1.9%	0.9%	0.8%	1.7%	2.1%	1.2%	1.8%	1.4%	1.3%
Native American	0.2%	0.2%	0.2%	0.4%	0.2%	0.2%	0.1%	0.2%	0.2%	0.2%	0.1%	0.1%	0.1%	0.2%
Pacific Islander	0.2%	0.6%	0.2%	0.3%	0.2%	0.2%	0.3%	0.2%	0.3%	0.4%	0.3%	0.1%	0.3%	0.3%
Other Race	0.3%	0.3%	0.3%	0.2%	0.3%	0.2%	0.3%	0.4%	0.4%	0.2%	0.6%	0.3%	0.5%	0.3%
Two or More Races	1.9%	1.0%	2.0%	0.7%	1.3%	0.5%	1.5%	0.9%	1.4%	0.9%	5.9%	1.8%	3.7%	1.4%

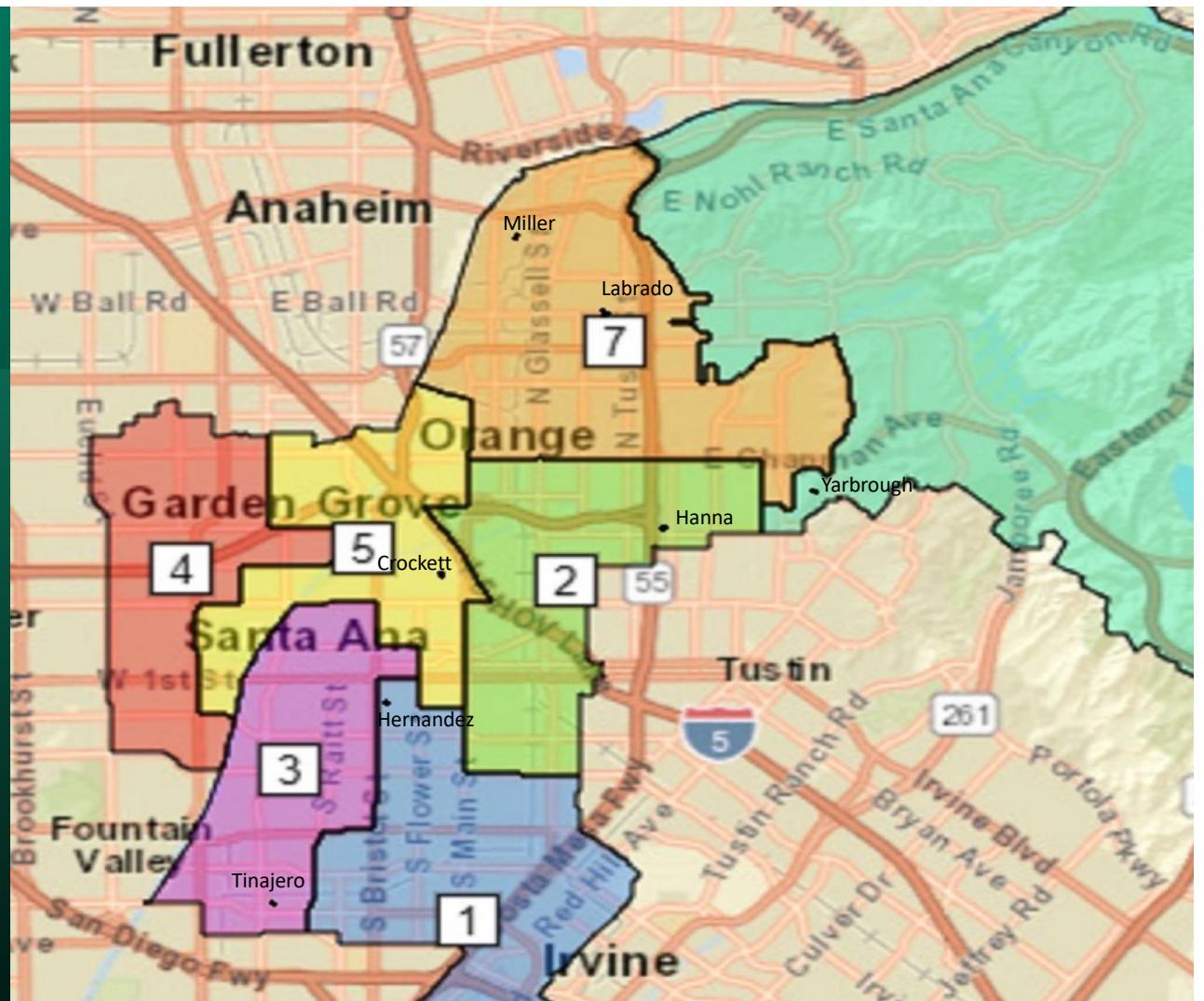
* Source: Census 2020 P.L. 94-171 Redistricting Data Summary Files ** Source: American Community Survey, 2015-2019 Data

RSCCD TRUSTEE AREA PLAN 3B
Latino/Asian Fusion Plan
“GGUSD Option”



RSCCD Plan 3B

RSCCD Plan 3B



RSCCD Trustee Area Plan 3B Demographics

Population 571,255

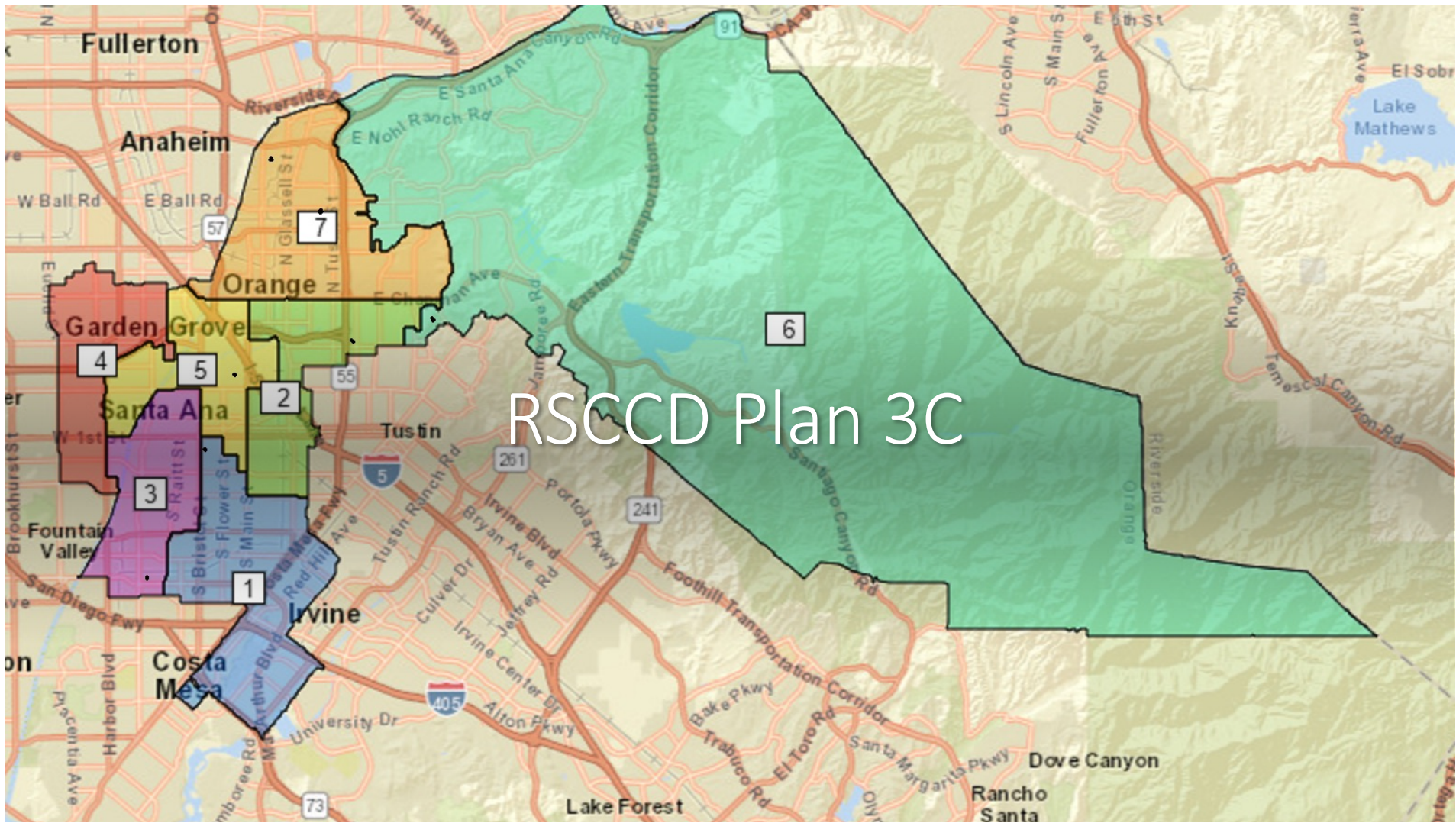
Median 81,608

Deviation 4.6%

Trustee Area	TA 1		TA 2		TA 3		TA 4		TA 5		TA 6		TA 7	
Population*	82,799		82,118		83,052		81,383		80,732		81,869		79,302	
Population Variance	1.5%		0.6%		1.8%		-0.3%		-1.1%		0.3%		-2.8%	
CVAP**	47,704		43,655		39,680		50,267		45,134		61,149		50,605	
TP and CVAP	TP	CVAP	TP	CVAP	TP	CVAP	TP	CVAP	TP	CVAP	TP	CVAP	TP	CVAP
Hispanic	71.3%	59.9%	71.3%	52.7%	82.9%	71.1%	49.3%	38.8%	69.6%	56.3%	17.2%	14.8%	47.7%	30.4%
White	13.9%	24.0%	19.1%	36.3%	5.3%	12.0%	10.0%	17.4%	13.3%	23.5%	54.5%	63.2%	36.4%	54.9%
Asian	11.0%	12.4%	5.9%	7.5%	8.4%	14.2%	37.5%	41.4%	15.1%	16.5%	20.2%	18.1%	9.8%	11.0%
African American	1.2%	1.6%	0.9%	1.8%	1.1%	2.1%	0.9%	0.7%	1.5%	2.1%	1.2%	1.8%	1.4%	1.3%
Native American	0.2%	0.2%	0.2%	0.4%	0.2%	0.2%	0.1%	0.2%	0.2%	0.2%	0.1%	0.1%	0.1%	0.3%
Pacific Islander	0.2%	0.6%	0.2%	0.3%	0.2%	0.2%	0.3%	0.2%	0.3%	0.5%	0.3%	0.1%	0.3%	0.4%
Other Race	0.3%	0.3%	0.3%	0.2%	0.3%	0.2%	0.3%	0.3%	0.4%	0.2%	0.6%	0.3%	0.5%	0.3%
Two or More Races	1.9%	1.0%	2.0%	0.8%	1.5%	0.5%	1.3%	1.0%	1.5%	0.7%	5.9%	1.8%	3.7%	1.4%

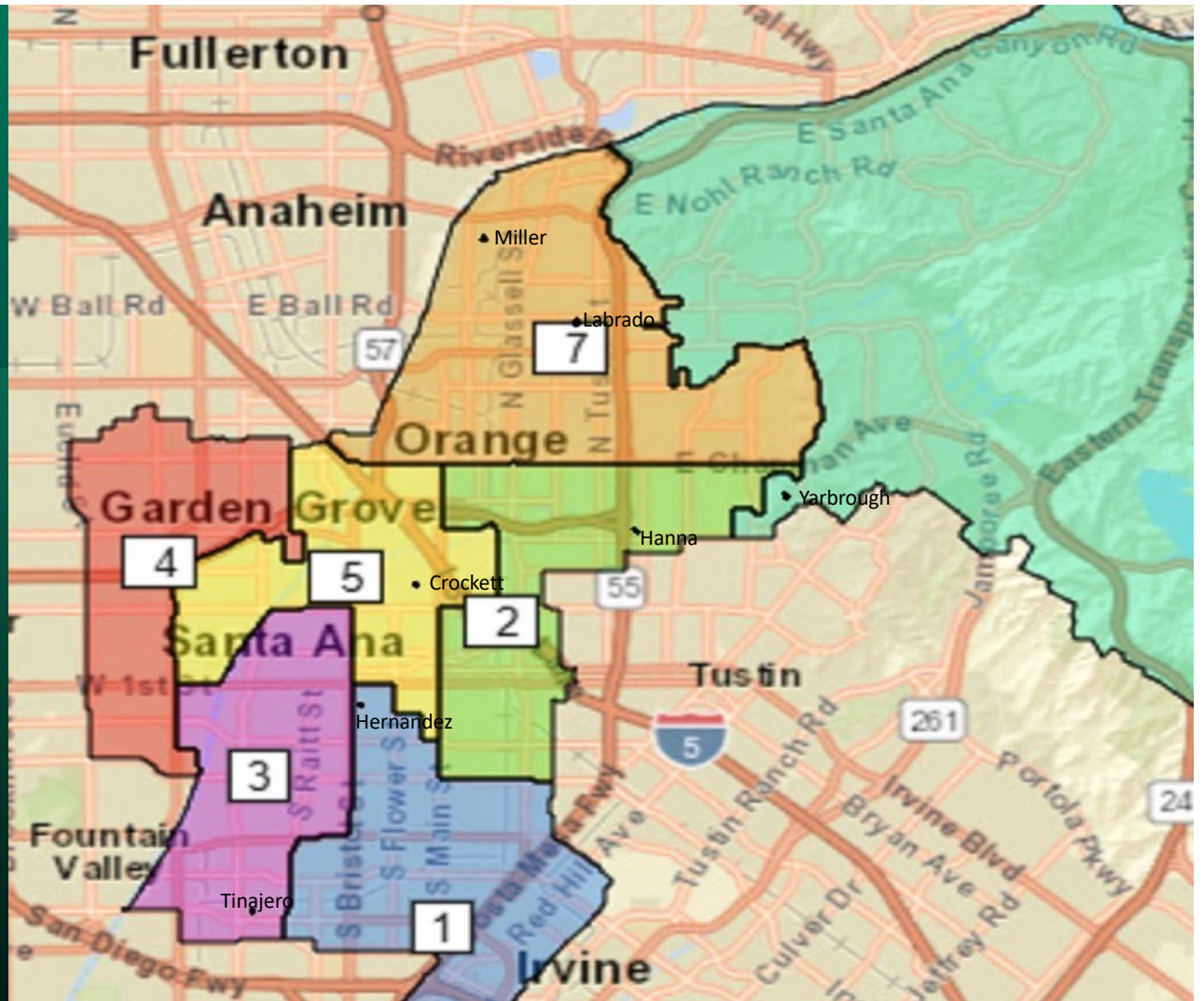
* Source: Census 2020 P.L. 94-171 Redistricting Data Summary Files ** Source: American Community Survey, 2015-2019 Data

RSCCD TRUSTEE AREA PLAN 3C
Latino/Asian Fusion Plan
“Harbor Boundary”



RSCCD Plan 3C

RSCCD Plan 3C



RSCCD Trustee Area Plan 3C Demographics

Population 571,255

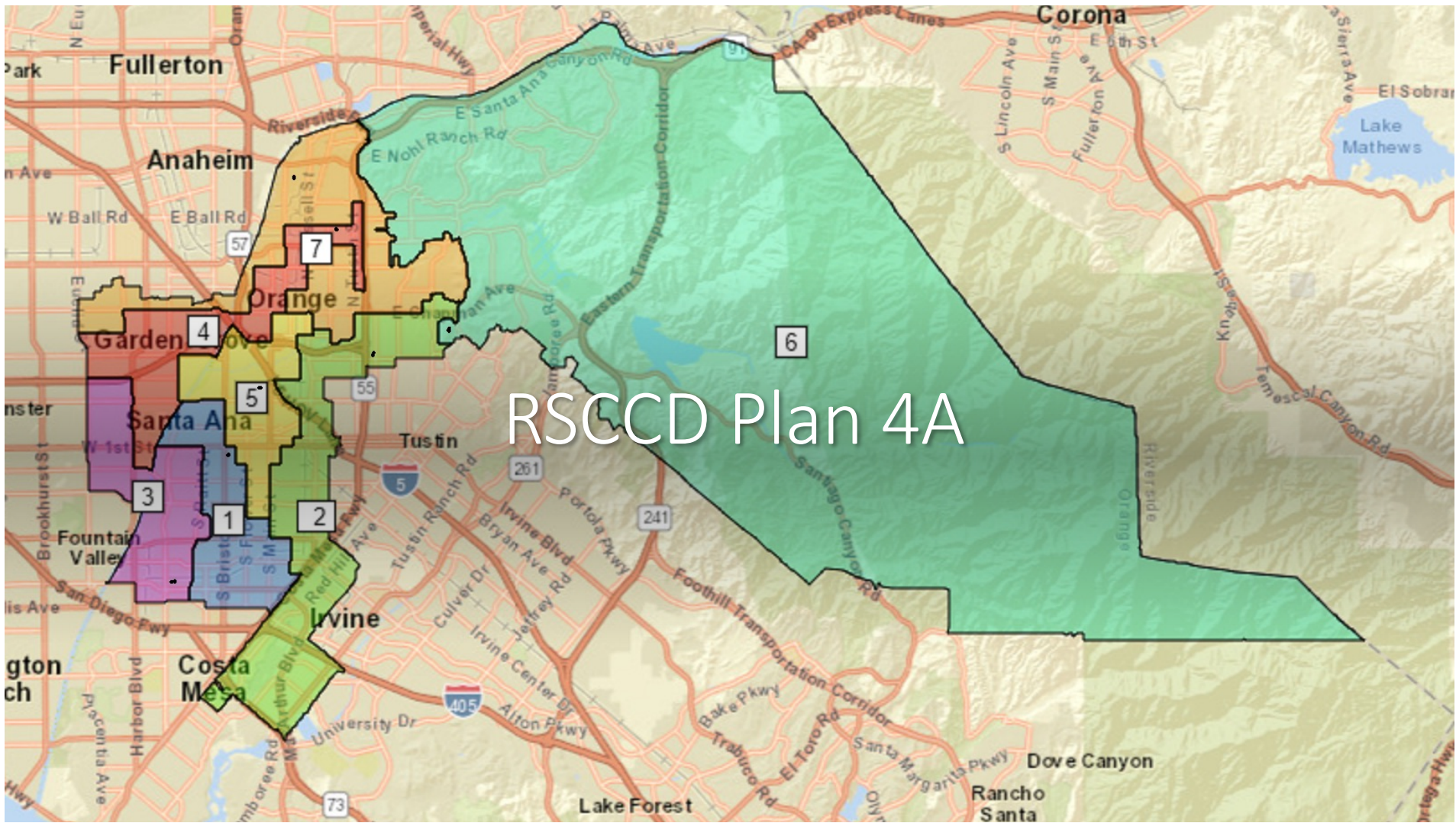
Median 81,608

Deviation 2.2%

Trustee Area	TA 1		TA 2		TA 3		TA 4		TA 5		TA 6		TA 7	
Population*	81,648		80,543		82,353		80,724		81,763		81,869		82,355	
Population Variance	0.1%		-1.3%		0.9%		-1.1%		0.2%		0.3%		0.9%	
CVAP**	47,439		42,670		39,227		49,675		45,557		61,149		52,477	
TP and CVAP	TP	CVAP	TP	CVAP	TP	CVAP	TP	CVAP	TP	CVAP	TP	CVAP	TP	CVAP
Hispanic	71.0%	59.7%	72.4%	52.6%	83.1%	71.8%	49.7%	39.0%	69.6%	56.3%	17.2%	14.8%	47.2%	30.7%
White	14.1%	24.1%	18.5%	36.1%	4.5%	10.4%	10.3%	17.3%	13.8%	24.5%	54.5%	63.2%	36.0%	54.1%
Asian	11.1%	12.5%	5.6%	7.9%	9.0%	14.2%	36.9%	40.7%	12.9%	15.7%	20.2%	18.1%	10.4%	11.3%
African American	1.2%	1.6%	0.9%	1.9%	1.1%	1.9%	0.9%	0.8%	1.5%	1.9%	1.2%	1.85	1.6%	1.4%
Native American	0.2%	0.2%	0.2%	0.5%	0.2%	0.2%	0.1%	0.2%	0.2%	0.2%	0.1%	0.1%	0.1%	0.2%
Pacific Islander	0.2%	0.6%	0.2%	0.3%	0.2%	0.2%	0.3%	0.2%	0.3%	0.3%	0.3%	0.1%	0.3%	0.5%
Other Race	0.3%	0.3%	0.3%	0.2%	0.3%	0.2%	0.3%	0.4%	0.4%	0.1%	0.6%	0.3%	0.5%	0.3%
Two or More Races	1.9%	1.0%	1.9%	0.5%	1.3%	0.5%	1.5%	0.9%	1.4%	1.0%	5.9%	1.8%	3.8%	1.5%

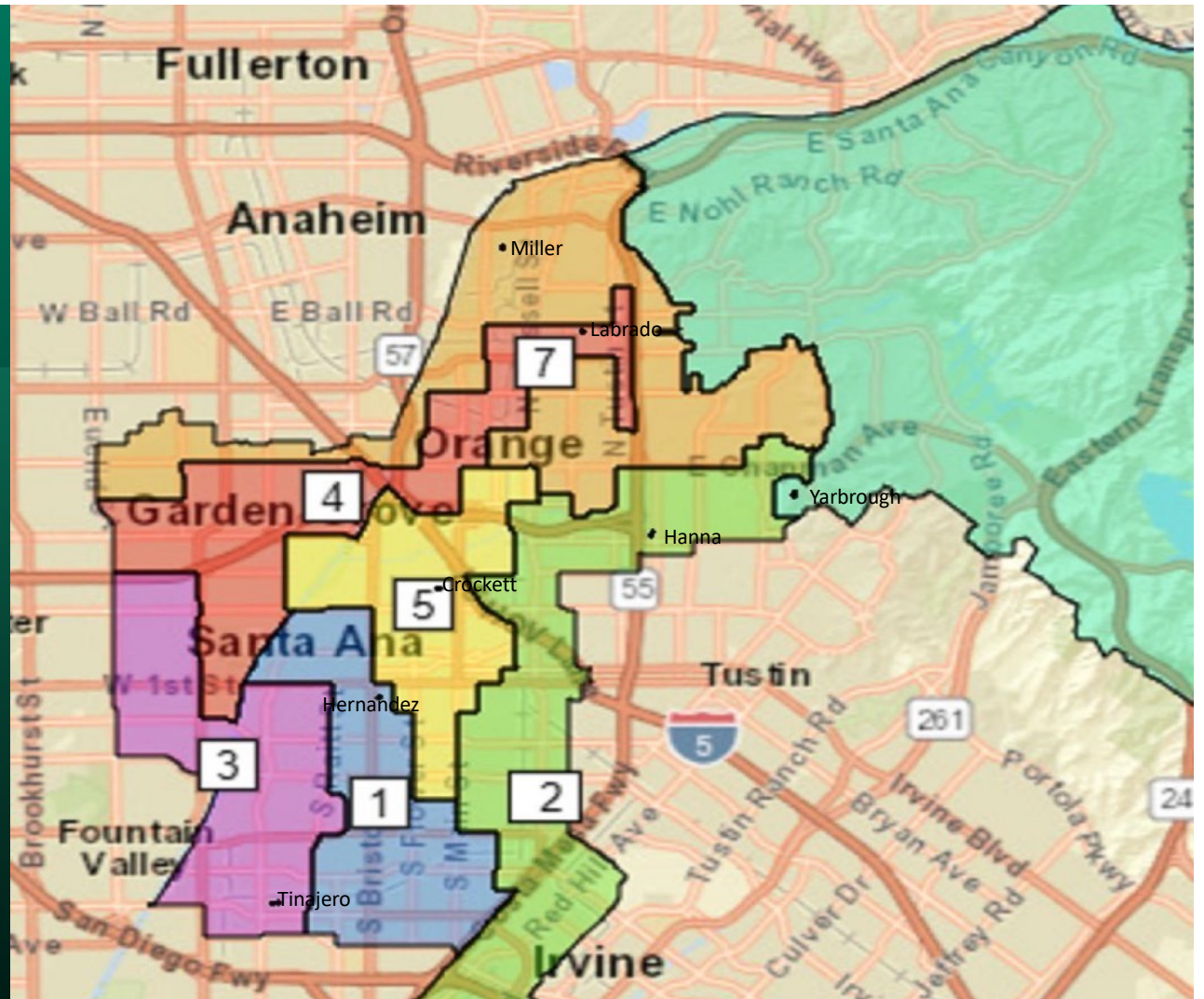
* Source: Census 2020 P.L. 94-171 Redistricting Data Summary Files ** Source: American Community Survey, 2015-2019 Data

RSCCD TRUSTEE AREA PLAN 4A
Section 2 Maximization Plan



RSCCD Plan 4A

RSCCD Plan 4A



RSCCD Trustee Area Plan 4A Demographics

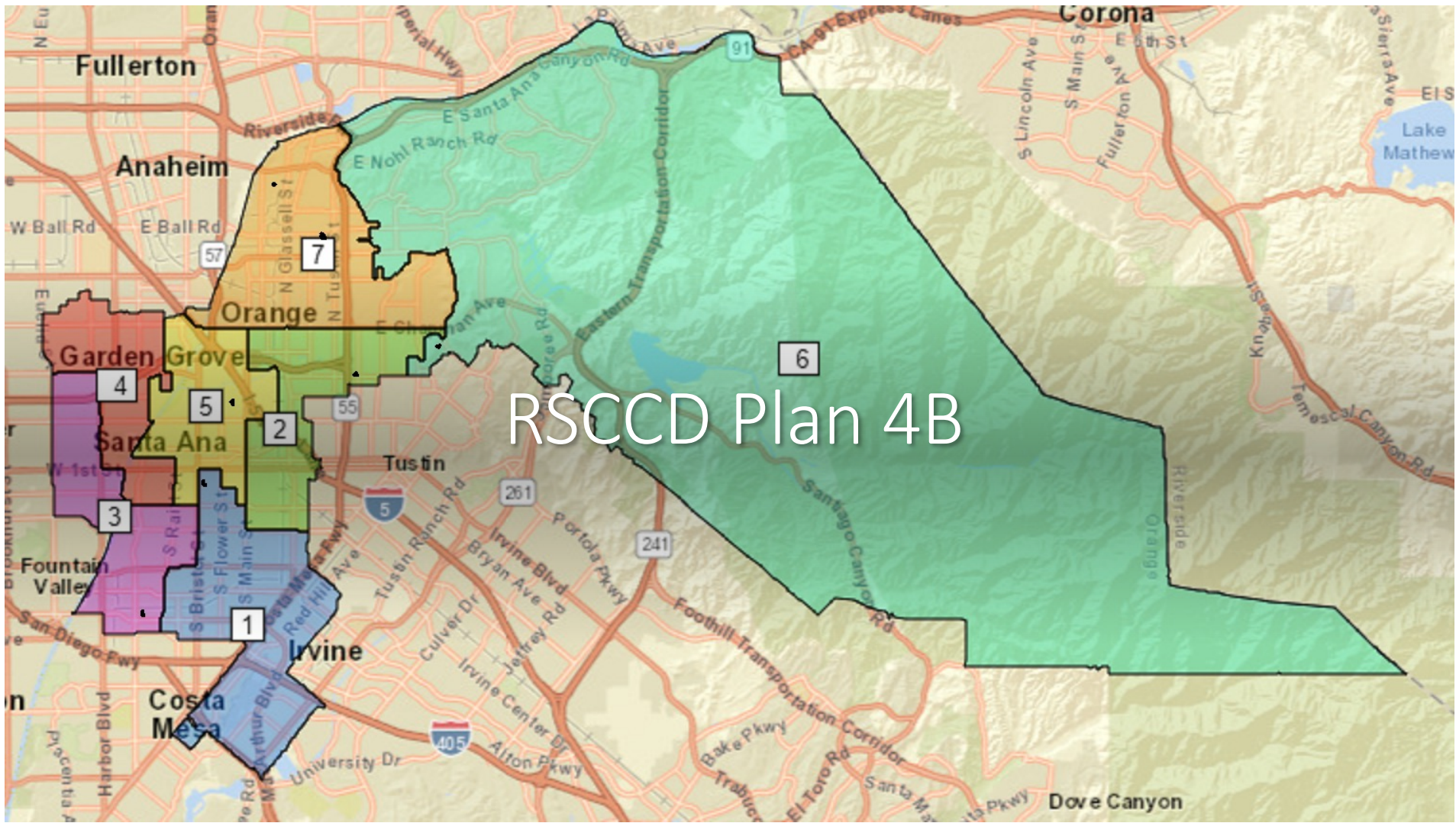
Population 571,255

Median 81,608

Deviation 7.1%

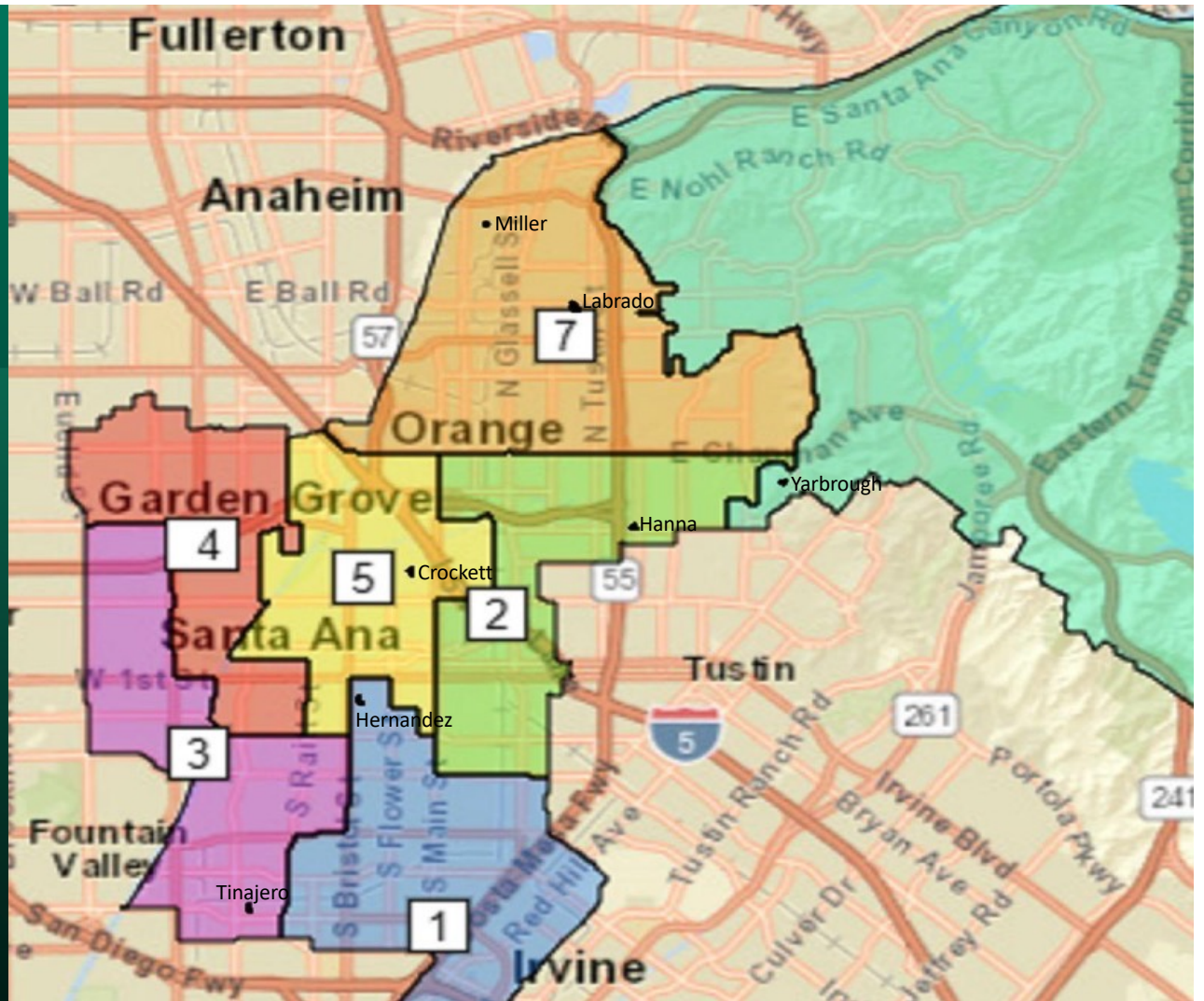
Trustee Area	TA 1		TA 2		TA 3		TA 4		TA 5		TA 6		TA 7	
Population*	78,496		82,869		83,166		84,312		81,390		80,977		80,048	
Population Variance	-3.8%		1.6%		1.9%		3.3%		-0.3%		-0.8%		-1.9%	
CVAP**	43,320		48,242		43,464		49,405		38,615		60,510		54,638	
TP and CVAP	TP	CVAP	TP	CVAP	TP	CVAP	TP	CVAP	TP	CVAP	TP	CVAP	TP	CVAP
Hispanic	79.0%	69.3%	68.4%	50.4%	67.3%	53.0%	63.1%	50.3%	76.2%	61.8%	17.1%	14.7%	38.8%	25.9%
White	8.7%	16.0%	19.3%	36.3%	6.0%	11.7%	12.2%	22.6%	13.6%	24.0%	54.5%	63.1%	38.4%	54.5%
Asian	9.3%	11.4%	8.4%	9.5%	24.1%	32.6%	21.2%	23.9%	6.9%	11.4%	21.2%	18.3%	16.2%	15.8%
African American	1.1%	1.4%	1.0%	2.3%	0.9%	1.3%	1.2%	1.7%	1.1%	1.2%	1.3%	1.8%	1.7%	1.4%
Native American	0.2%	0.4%	0.2%	0.4%	0.2%	0.2%	0.2%	0.3%	0.2%	0.2%	0.1%	0.1%	0.2%	0.2%
Pacific Islander	0.2%	0.6%	0.2%	0.1%	0.2%	0.1%	0.3%	0.2%	0.2%	0.6%	0.3%	0.1%	0.2%	0.5%
Other Race	0.2%	0.2%	0.4%	0.3%	0.3%	0.4%	0.3%	0.3%	0.3%	0.2%	0.5%	0.2%	0.5%	0.3%
Two or More Races	1.3%	0.7%	2.1%	0.7%	1.0%	0.7%	1.5%	0.7%	1.5%	0.6%	5.0%	1.7%	4.0%	1.4%

RSCCD TRUSTEE AREA PLAN 4B
Section 2 Maximization Plan
“Plan 3C Revise”



RSCCD Plan 4B

RSCCD Plan 4B



RSCCD Trustee Area Plan 4B Demographics

Population 571,255

Median 81,608

Deviation 7.0%

Trustee Area	TA 1		TA 2		TA 3		TA 4		TA 5		TA 6		TA 7	
Population*	81,648		80,543		85,316		79,572		79,952		81,869		82,355	
Population Variance	0.1%		-1.3%		4.5%		-2.5%		-2.0%		0.3%		0.9%	
CVAP**	47,439		42,670		47,095		43,917		43,447		61,149		52,477	
TP and CVAP	TP	CVAP	TP	CVAP	TP	CVAP	TP	CVAP	TP	CVAP	TP	CVAP	TP	CVAP
Hispanic	71.0%	59.7%	72.4%	52.6%	64.9%	52.6%	64.0%	50.1%	74.0%	60.9%	17.2%	14.8%	47.2%	30.7%
White	14.1%	24.1%	18.5%	36.1%	6.5%	12.9%	8.7%	17.4%	13.6%	23.7%	54.5%	63.2%	36.0%	54.1%
Asian	11.1%	12.5%	5.6%	7.9%	26.0%	32.0%	24.3%	30.1%	8.7%	11.4%	20.2%	18.1%	10.4%	11.3%
African American	1.2%	1.6%	0.9%	1.9%	0.8%	0.9%	0.9%	1.3%	1.7%	2.4%	1.2%	1.85	1.6%	1.4%
Native American	0.2%	0.2%	0.2%	0.5%	0.2%	0.1%	0.2%	0.2%	0.1%	0.4%	0.1%	0.1%	0.1%	0.2%
Pacific Islander	0.2%	0.6%	0.2%	0.3%	0.2%	0.3%	0.3%	0.1%	0.2%	0.3%	0.3%	0.1%	0.3%	0.5%
Other Race	0.3%	0.3%	0.3%	0.2%	0.3%	0.4%	0.3%	0.2%	0.3%	0.2%	0.6%	0.3%	0.5%	0.3%
Two or More Races	1.9%	1.0%	1.9%	0.5%	1.1%	0.8%	1.3%	0.6%	1.4%	0.7%	5.9%	1.8%	3.8%	1.5%